

WHERE HISTORIC MEETS CONTEMPORARY - LOS LUNAS, NM

## NOW AVAILABLE

NEQ HWY 6 & LOS LENTES RD  
LOS LUNAS, NM

- Zoned C-1
- Located in the Village of Los Lunas
- Historic 1861 Mercantile Store and Huning Family Residence on property.
- Only 15 minutes South of Albuquerque on I-25

# VILLAGE MARKETPLACE

8.81 ± AC :: \$3,453,872 (\$9.00/SF)



### FOR MORE INFORMATION CONTACT:

**Michael Schiffer**

First Vice President

505.837.4913

michael.schiffer@cbre.com

**Trevor Hatchell**

First Vice President

505.837.4922

trevor.hatchell@cbre.com

**Amanda Velarde**

Client Services Specialist

505.837.4920

amanda.velarde@cbre.com

# CBRE



# VILLAGE MARKETPLACE

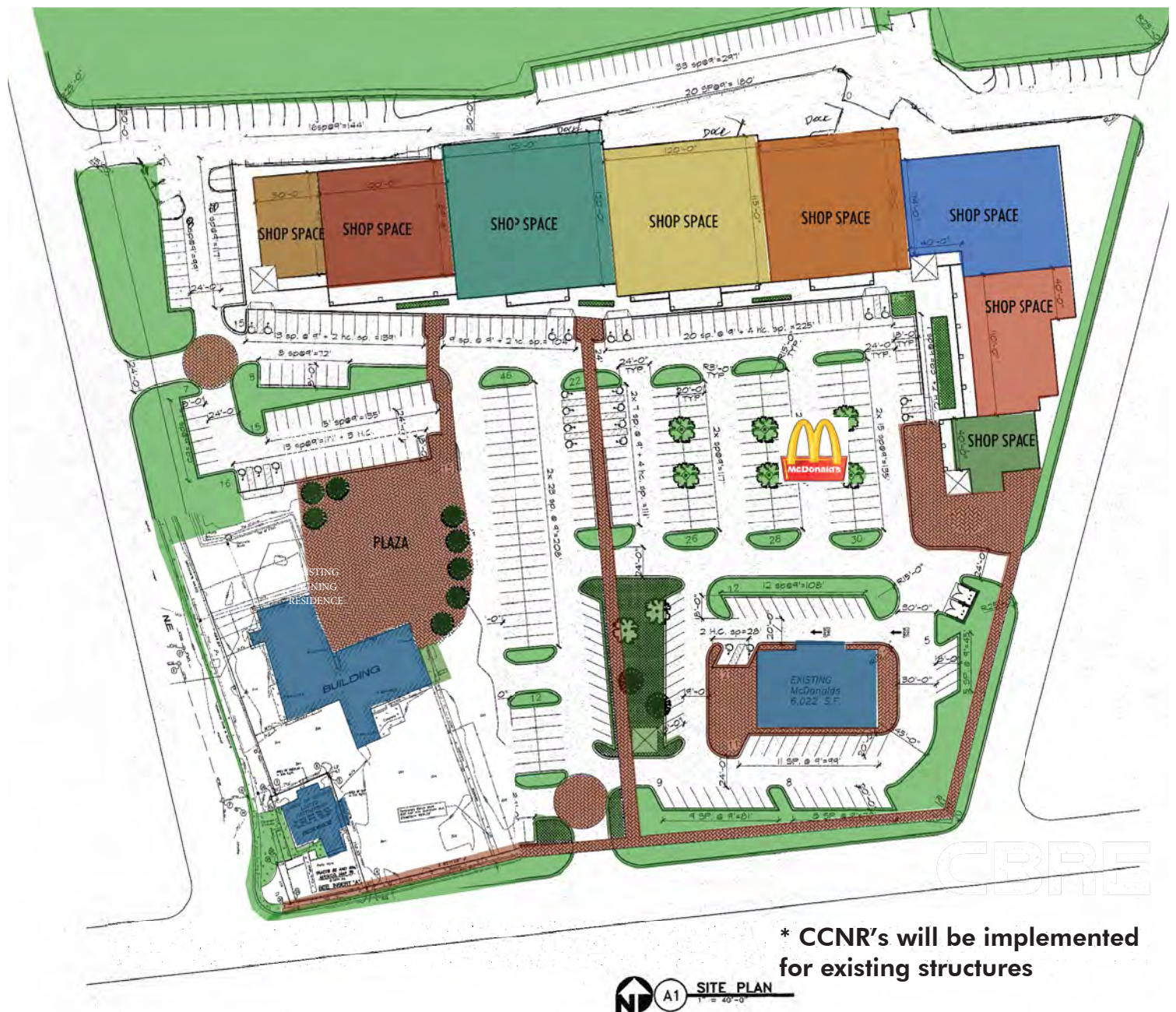
**NOW AVAILABLE :: 8.81 ± ACRES :: \$3,453,872**

**NEQ HWY 6 (MAIN ST) & LOS LENTES RD :: LOS LUNAS, NM**

The Village MarketPlace site located at Los Lentes and Main Street in Los Lunas has been in the Huning family since the early 1850's, when the Huning brothers emigrated from Germany and started various enterprises in New Mexico and Arizona. The site is and has been the center for trade and a gathering place for people in the Village of Los Lunas since those early days when the Huning Mercantile Store (now Leftovers), was operated by Louis and Henry Huning. The historic family house received many visitors and provided a secure area in the interior placita for wagons. This focal point of the historic home now serves as a peaceful-serene garden courtyard.

The current owners, fourth generation decedents, and the locals take great pride in the heritage of this historic property and anticipate the continuation of it being a center for commerce and gathering place.

## CONCEPTUAL SITE PLAN



\* CCNR's will be implemented for existing structures

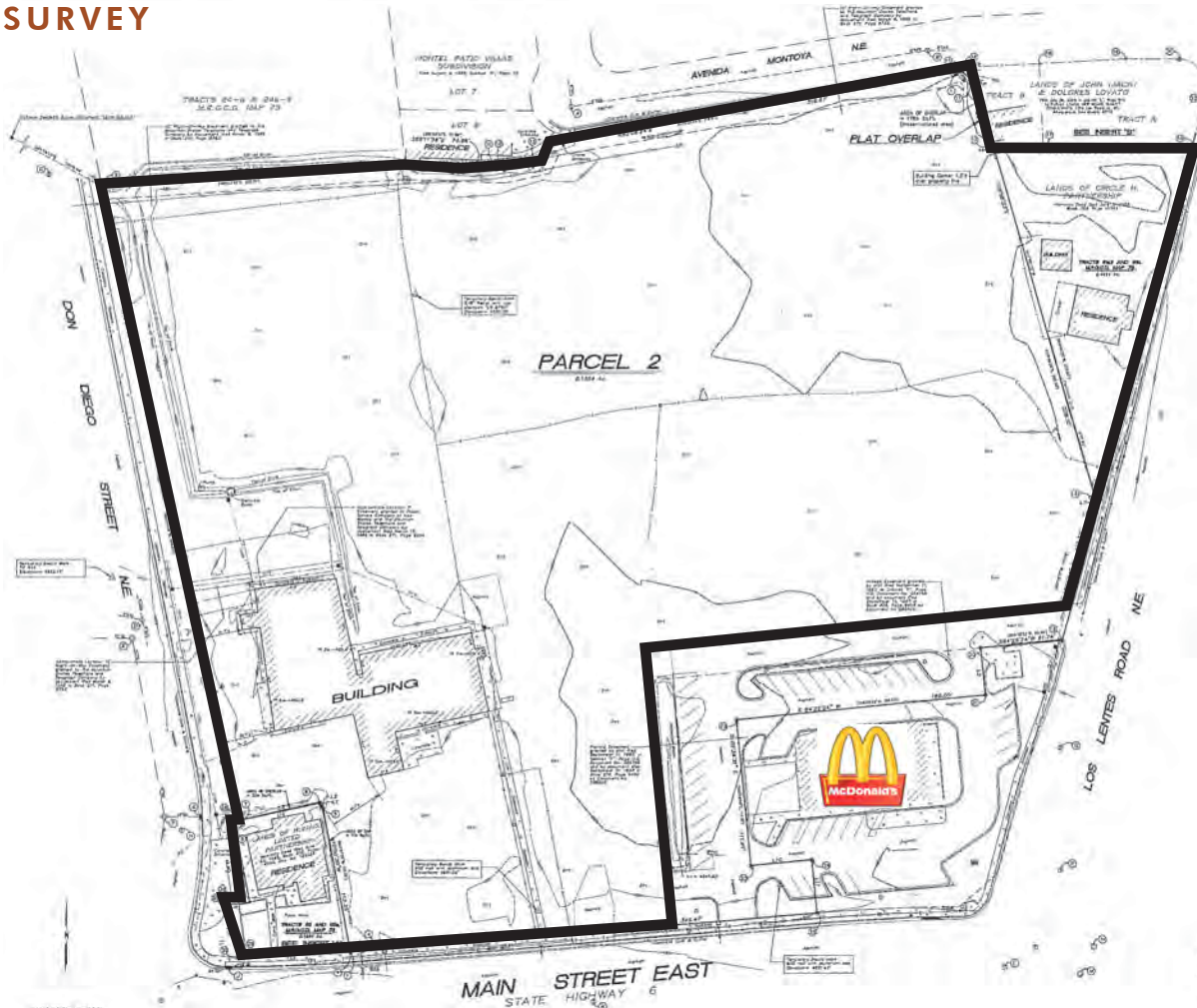


# VILLAGE MARKETPLACE

NOW AVAILABLE :: 8.81 ± ACRES :: \$3,453,872

NEQ HWY 6 (MAIN ST) & LOS LENTES RD :: LOS LUNAS, NM

## SURVEY



## EXISTING HISTORIC BUILDINGS





# VILLAGE MARKETPLACE

**NOW AVAILABLE :: 8.81± ACRES :: \$3,453,872**

**NEQ HWY 6 (MAIN ST) & LOS LENTES RD :: LOS LUNAS, NM**



| 2011 Est Demographics | 1 mile   | 3 miles  | 5 miles  |
|-----------------------|----------|----------|----------|
| POPULATION            | 6,351    | 24,688   | 37,948   |
| 2016 PRJ POPULATION   | 6,783    | 26,177   | 39,718   |
| AVERAGE HH INCOME     | \$48,889 | \$53,660 | \$53,991 |
| AVERAGE AGE           | 35.83    | 37.09    | 37.59    |

## 2010 Traffic Counts

|                          |        |
|--------------------------|--------|
| Hwy 6 East of Los Lentes | 20,200 |
| Hwy 6 West of Los Lentes | 27,500 |

# CBRE

CBRE | 6100 Uptown NE | Suite 300 | Albuquerque, NM 87110 | [www.cbre.com/abq](http://www.cbre.com/abq)

© 2011 CBRE, Inc. This information has been obtained from sources believed reliable. We have not verified it and make no guarantee, warranty or representation about it. Any projections, opinions, assumptions or estimates used are for example only and do not represent the current or future performance of the property. You and your advisors should conduct a careful, independent investigation of the property to determine to your satisfaction the suitability of the property for your needs.